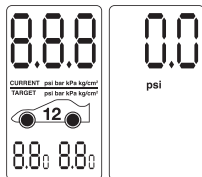




## 12294 PROGRAMMABLE DIGITAL TIRE PRESSURE GAUGE

### PRESSURE MEASUREMENT WITHOUT PRESET GOAL

1. Press "ON" button to activate all digits until "0.0" appears (Default unit of measure is PSI).



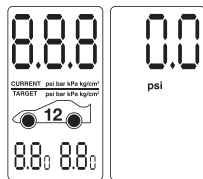
2. Push nozzle of gauge onto tire valve. Make sure a good seal is made between the nozzle and the valve stem. No hissing sound of escaping air should be heard from the valve.
3. Hold gauge on valve stem tightly until the pressure reading is displayed and locked.



4. After the reading has locked on the display, quickly remove the tire gauge from valve stem.
5. The pressure reading remains visible on the screen for 10 seconds. Gauge turns off automatically.

### HOW TO SET PRESSURE TARGET

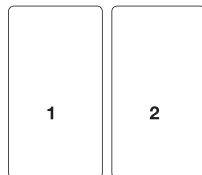
1. Press "ON" button to activate all digits until "0.0" appears (Default unit of measure is PSI).



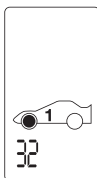
2. Press and hold "ON" button for 3 seconds to enter setting mode. The unit appears and blinks. Press up/down arrows to switch between PSI, BAR, kPa and kg/cm². Press "ON" button to confirm.



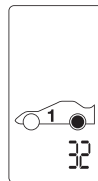
3. Default vehicle number blinks. Press up/down to switch between vehicle 1 and vehicle 2. Press "ON" button to confirm.



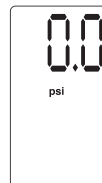
4. Front tire target pressure blinks. Press up/down to change the target pressure and press "ON" button to confirm.



5. Back tire target pressure blinks. Press up/down to change the target pressure and press "ON" button to confirm.

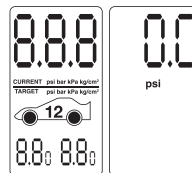


6. The pressure gauge has been programmed and the display will go back to "0.0".

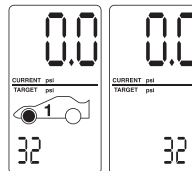


### PRESSURE MEASUREMENT WITH PRESET GOAL

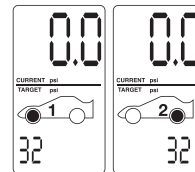
1. Press "ON" button to activate all digits until "0.0" appears (Default unit of measure is PSI).



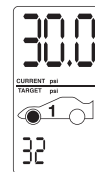
2. Press up/down to choose between front and rear tires.



3. Press and hold "up" button for 3 seconds. Choose vehicle 1; press and hold "down" button for 3 seconds, choose vehicle 2.



4. Push nozzle of gauge onto tire valve. Make sure a good seal is made between the nozzle and the valve stem so that no hissing sound of escaping air is heard.
5. Hold gauge on valve stem until the pressure reading is displayed and locked.



6. After the reading has locked on the display, promptly remove gauge from valve stem.
7. The actual pressure reading - target number - will stay on the screen for 10 seconds. Gauge turns off automatically.
8. Before gauge turns off, follow steps 2-6 to measure pressure of the second tire.
9. If the pressure reading is higher than expected, press and hold bleed button to release air. The LCD will flash "bL". Release bleed button to get the actual pressure in the tire from the screen.



FLASHLIGHT OPERATION

Press and hold the flashlight button to turn on the flashlight.

Release the flashlight button to turn it off.

TIRE PRESSURE ADVICE AND ACTIONS

Always follow the vehicle manufacturer's pressure recommendation, which is based on cold tire temperatures. Check tire pressure regularly, at least monthly or preferably every two weeks, when tires are cold.

Use a soft, damp cloth to clean the gauge. Do not use any liquids or cleaners.

REPLACING THE BATTERIES

To replace the batteries, open the battery cover and remove the old batteries and immediately recycle or dispose of used batteries according to local regulations and keep away from children. Do NOT dispose of batteries in household trash or incinerate.

Do not force discharge, recharge, disassemble, heat above 60°C (manufacturer's specified temperature rating) or incinerate. Doing so may result in injury due to venting, leakage or explosion resulting in chemical burns.

Ensure the batteries are installed correctly according to polarity (+ and -).

Do not mix old and new batteries, different brands or types of batteries, such as alkaline, carbon-zinc, or rechargeable batteries. Remove and immediately recycle or dispose of batteries from equipment not used for an extended period of time according to local regulations.

Always completely secure the battery compartment. If the battery compartment does not close securely, stop using the product, remove the batteries, and keep them away from children.

What to do if you observe an unusually high or low reading:

- a) Make sure a good seal is made between the nozzle and the valve stem so that no hissing sound of escaping air is heard.
- b) Make sure tires are cool and vehicle has not been driven on for several hours.

FCC Warning Statement  
Changes or modifications not expressly approved by the party responsible for compliance could void the user's authority to operate the equipment. This equipment has been tested and found to comply with the limits for a Class B digital device, pursuant to Part 15 of the FCC Rules. These limits are designed to provide reasonable protection against harmful interference in a residential installation. This equipment generates uses and can radiate radio frequency energy and, if not installed and used in accordance with the instructions, may cause harmful interference to radio communications. However, there is no guarantee that interference will not occur in a particular installation.

If this equipment does cause harmful interference to radio or television reception, which can be determined by turning the equipment off and on, the user is encouraged to try to correct the interference by one or more of the following measures:  
— Re-orient or re-locate the receiving antenna.  
— Increase the separation between the equipment and receiver.  
— Connect the equipment to an outlet on a circuit different from one that the receiver is connected.  
— Consult the dealer or an experienced radio/TV technician for help.  
This device complies with part 15 of the FCC rules. Operation is subject to the following two conditions (1) this device may not cause harmful interference, and (2) this device must accept any interference received, including interference that may cause undesired operation.

**WARNING**

- INGESTION HAZARD:**This product contains a button cell or coin battery.
- DEATH** or serious injury can occur if ingested.
- A swallowed button cell or coin battery can cause **Internal Chemical Burns** in as little as **2 hours**.
- KEEP** new and used batteries **OUT OF REACH** of **CHILDREN**.
- Seek immediate medical attention** if a battery is suspected to be swallowed or inserted inside any part of the body.



Even used batteries may cause severe injury or death.

Call a local poison control center for treatment information.

The battery type is CR2032, 3.0V/210mAh

Non-rechargeable batteries are not to be recharged.

TROUBLESHOOTING

What to do if a reading fails to appear (either blank display or all zeros):

- a) Read the instructions again and follow them carefully.
- b) If the gauge still does not work, contact customer support: +1(800) 403-0471

Scan the QR code to access further product information.





Customer Inquiries:  
We're at your service. Let us help you, find a better way forward.

Customer support:  
+1(800) 403-0471  
[Michelin@tire-inflation.com](mailto:Michelin@tire-inflation.com)

MICHELIN and/or the Michelin Man Device and/or BIBENDUM are trademark(s) owned by, and used with the permission of, the Michelin Group. © 2023 Michelin  
Manufactured and distributed under license by Enrich International Company LTD.  
16720 Chestnut Street #C City of Industry, CA 91748, USA



One (1) year Limited Warranty



Made in Vietnam